

Detailed instructions for this pattern can be found here:

<http://7pinedesign.com/charity-sewing-for-the-angel-babies/>

Caring Hands Cocoon

Top half of Cocoon Body
Tape top and bottom patterns together,
Cut 1 piece of Outer Fabric on CB fold,
Cut 1 piece of Fleece Lining on CB fold
If outer fabric is lightweight, cut 1 piece
Interfacing on fold

Connect pattern pieces here

Center-Back: cut on fold of fabric

2" test square

Bottom half of Cocoon Body

*Tape top and bottom patterns together here,
Cut 1 piece of Outer Fabric on CB fold,
Cut 1 piece of Fleece Lining on CB fold
If outer fabric is lightweight, cut 1 piece
Interfacing on fold*

Center-Back: cut on fold of fabric

6 1/2"

Attach inner blanket here

9" cocoon

7"

11" cocoon

7 1/2"

13" cocoon

8"

15" cocoon

15" cocoon

13" cocoon

2" test square

22

11" cocoon

9" cocoon

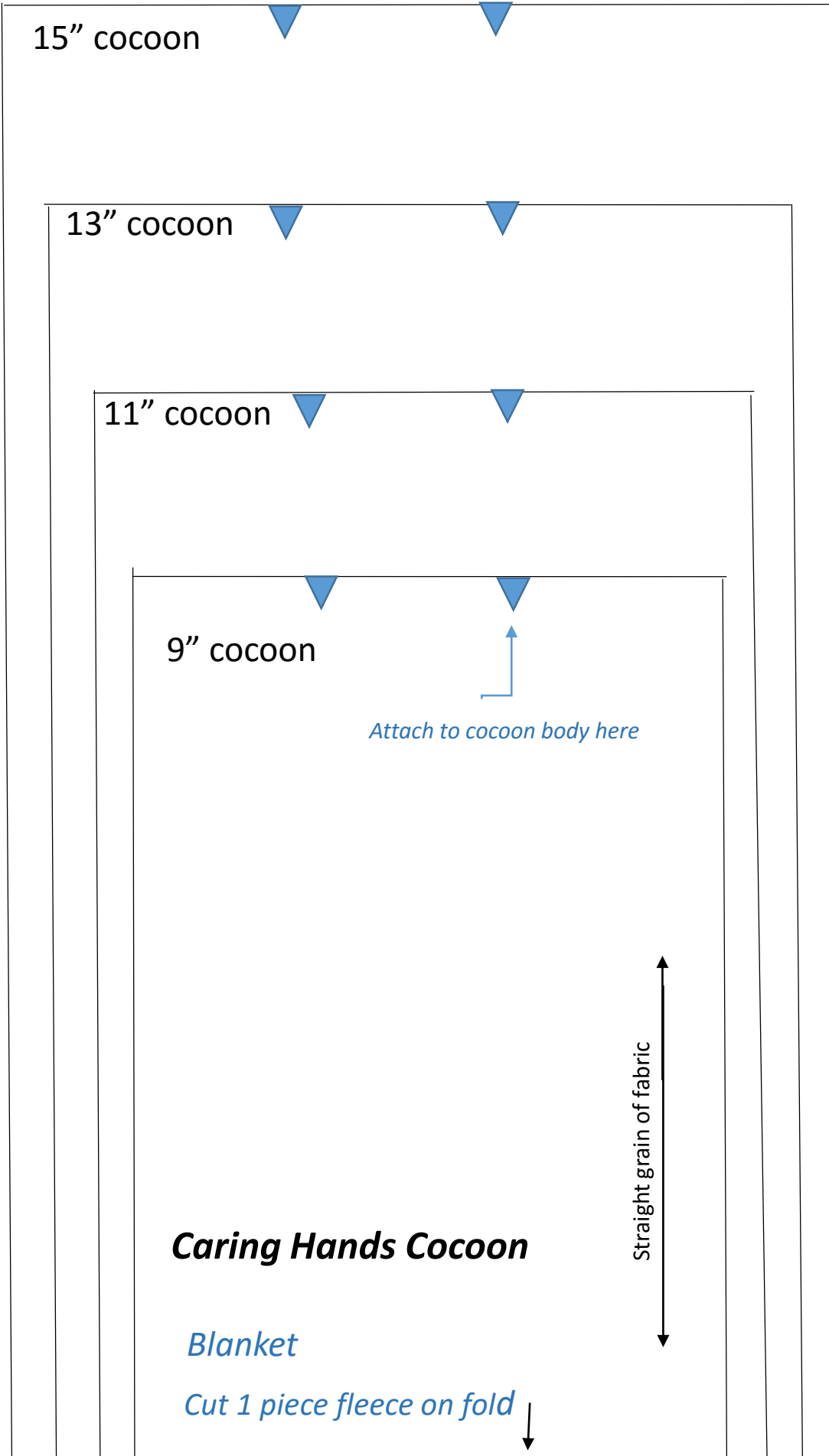
Attach to cocoon body here

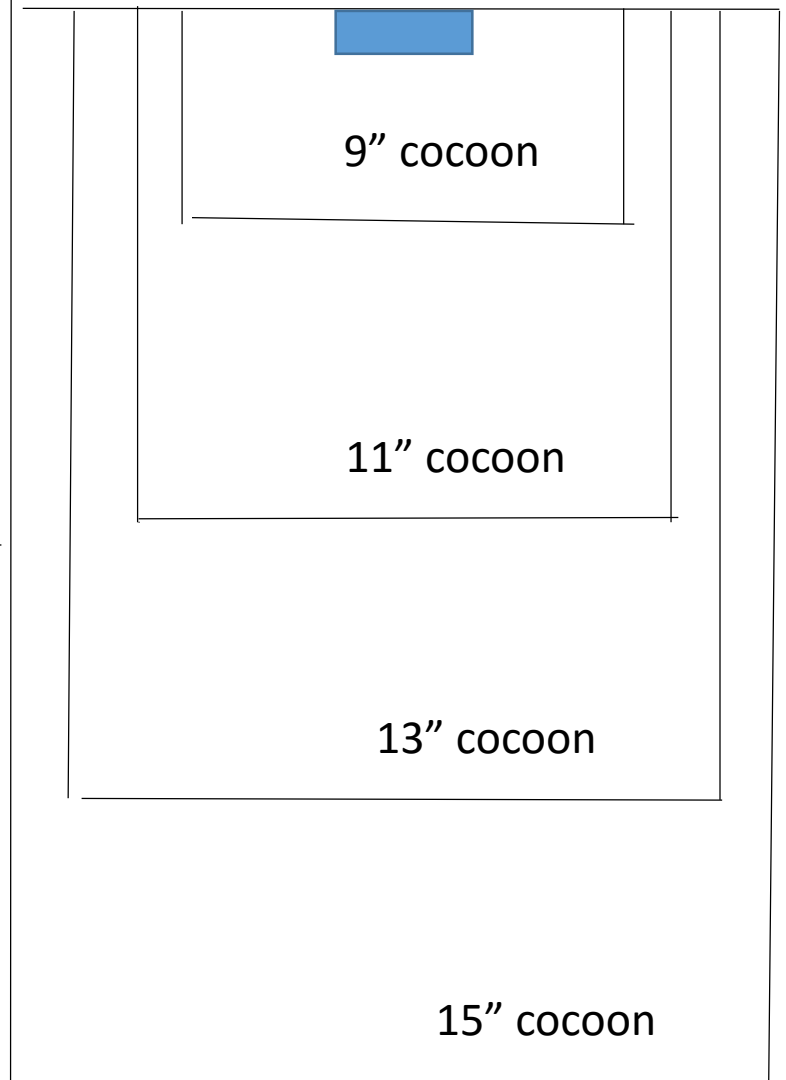
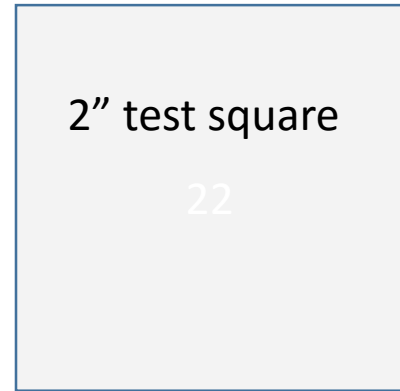
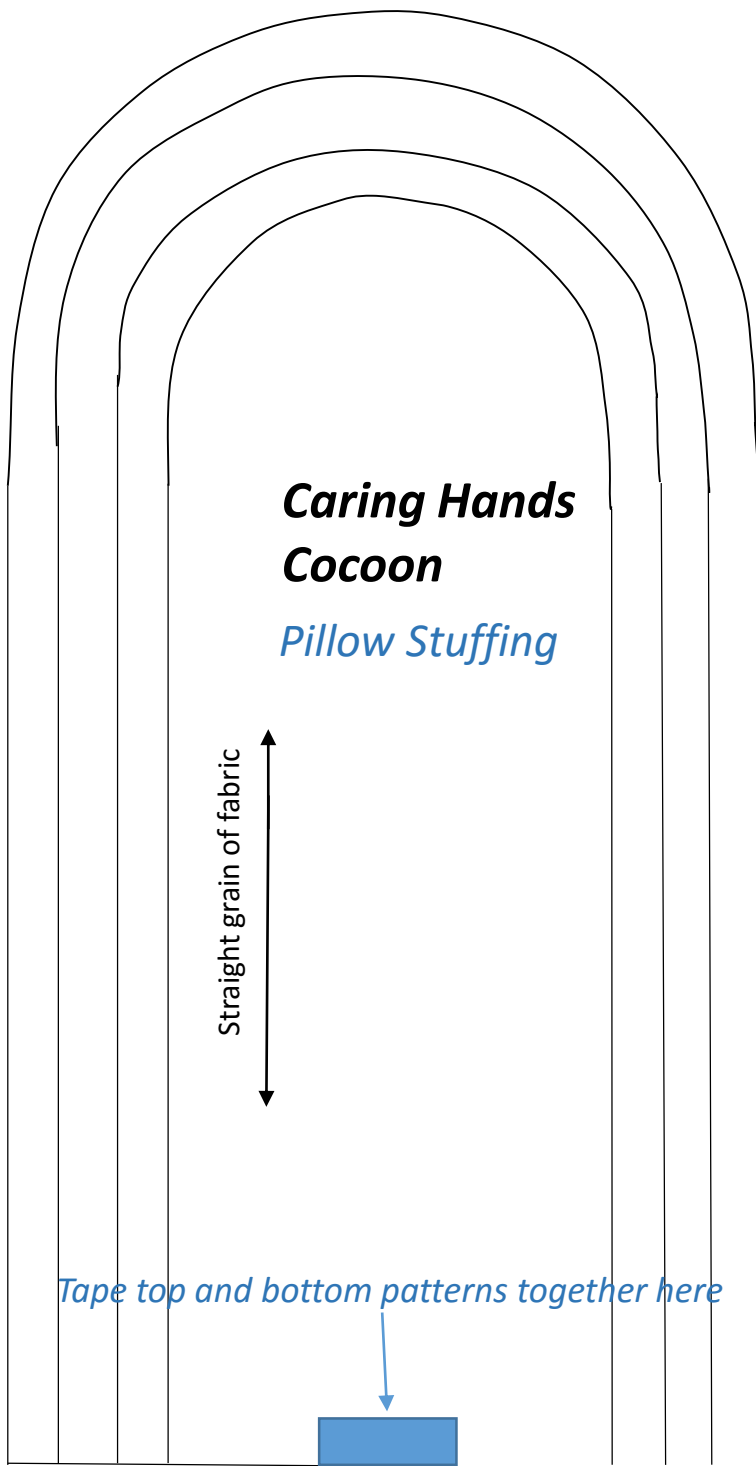
Straight grain of fabric

Caring Hands Cocoon

Blanket

Cut 1 piece fleece on fold





Caring Hands Cocoon

Pillow Cover

*Tape top and bottom
Pattern pieces together,
then cut 2 pieces of fleece*

Straight grain of fabric



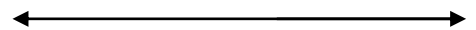
15" cocoon

13" cocoon

11" cocoon

9" cocoon

Straight grain of fabric



Adelaide's Angel Wrap with Support Pillow



In memory of our angel Adelaide.

(this pattern and any items made using it are to be used for bereavement support purposes only and are not to be sold)

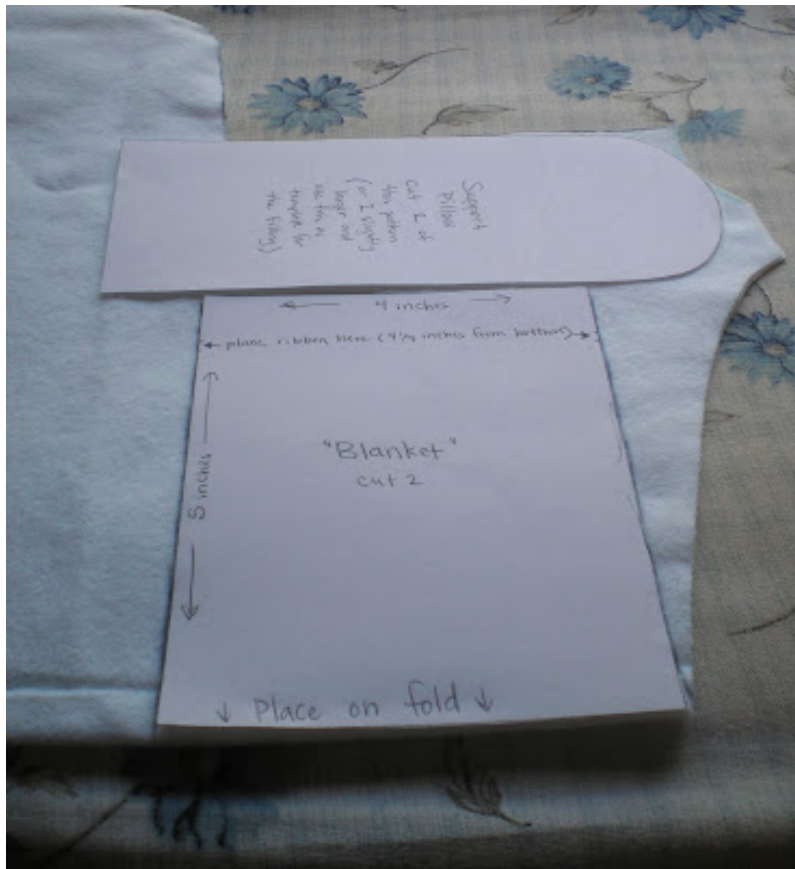
Making Adelaide's Wrap:

Materials:

- Flannel Fabric (1/2 yard)
- 1/8" ribbon (4 feet)
- coordinating thread

Fold fabric and place Adelaide's Angel Wrap pattern on fabric with the top of the pattern on the fold of fabric.

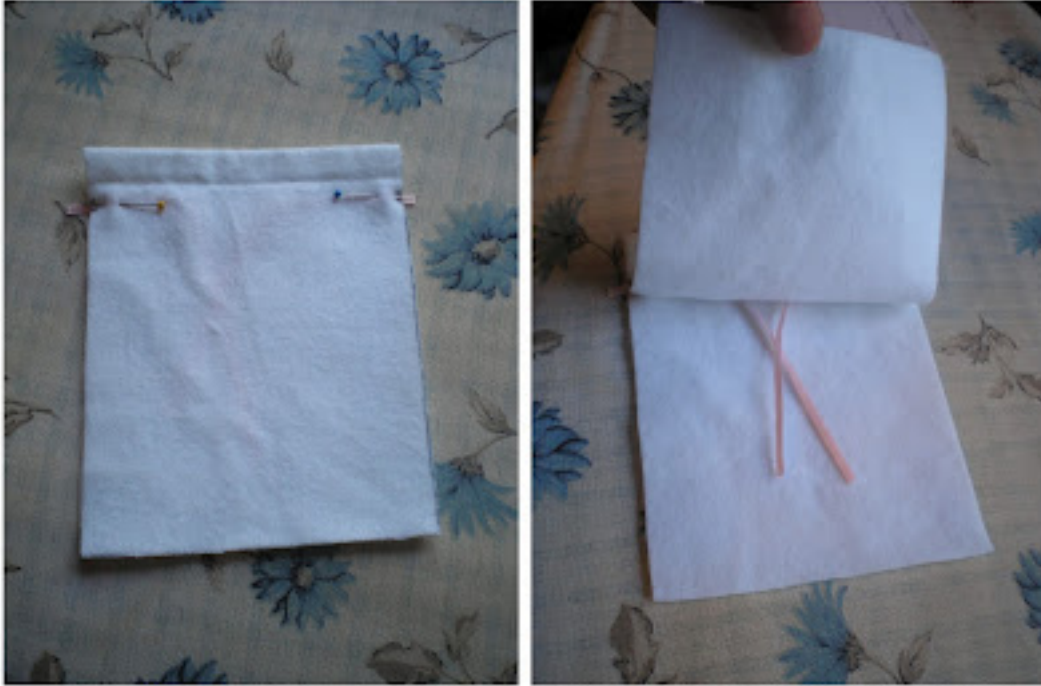
Trace pattern and cut out (2). I used a white flannel for the inside and a pattern for the outside.



Cut out the material for the blanket and support pillow.

Trace pattern for the exterior of the support pillow on fabric and cut out 2.

Place pattern of inner "blanket" on fold of fabric (this creates a super soft edge for the portion of the blanket that will be closest to the baby), trace and cut out. Then make sure the fabric is folded with right sides together.



Place ribbons (2 pieces, 5 inches in length) inside the blanket and pin into place about $\frac{3}{4}$ inch down from the folded edge of the blanket on each side (as marked on pattern).

Sew down both sides of the inner blanket using $\frac{1}{4}$ inch seam. Leave bottom open.

Trim seams (to $\frac{1}{8}$ inch) but **DO NOT** trim ribbon. Turn inner blanket inside out, make sure corners are out and press.



Fold exterior pieces of Adelaide's angel wrap so that right sides are together, and pin along edge as shown:



Sew with 1/4 inch seam down pinned edge. Trim the seam of both pieces and press seams open.



Place inner blanket in between the two exterior wrap pieces, centered over the seam (tuck the ribbon behind the inner blanket piece to keep it out of the way).



Place pressed pieces with right sides together (with inner blanket in place as seen in the picture above).



Pin ribbon (2 pieces 6 inches in length) in place on right edge of wrap
(ribbon should be pinned about 3/4 to 1 inch from bottom and top, see
markings on pattern)





Pin around outer edges of wrap, including hood section.

Use pins to mark a 2" or larger space that you will leave open for turning the wrap right side out.

Sew around edges of wrap (making sure to leave an opening to flip the wrap right side out).

Trim corners and seams. DO NOT trim the ribbon and DO NOT trim the open section.



Turn right side out.



Make sure corners are fully turned out, fold fabric of opening in, then
press
(I also fold the inner blanket up and press it).



Now you are ready for top-stitching. Sew $\frac{1}{8}$ inch all the way around the wrap (with the inner blanket folded upward as pictured above). This step will close the opening and give the wrap a nice finishing touch.

Next you will need to hand stitch the ribbons in place on the inside of the wrap to allow you to tie the inner blanket in place. Ribbon should be 5 inches in length (use the same color ribbon you sewed into the seams of the inner blanket). I measured 4 inches from the top-stitching, folded my blanket over to make sure the placement was correct, and hand stitched the ribbon in place.

(TIP: fold the end of the ribbon over a couple times before stitching to make it more secure)



Then you will need to do the same for the ribbons on the exterior of the wrap
to enable you to tie the wrap closed around the angel baby.

Fold the wrap closed to be able to see the best placement for the ribbons on the other wing of the wrap. I found that, for me, it was 3 and 3/4 inches from the edge of the wrap (as pictured below). My ribbons matched up with the ribbons already sewn into place at about 3/4 inch from the bottom for the lower ribbon and then 4 and 3/4 inches from the bottom of the wrap for the upper ribbon. Again fold the edges of the ribbons over a couple of times before stitching them in place.



Now the exterior of the wrap is finished and all you need to do is sew the support pillow. Cut your fill material (choose something absorbent - old towels, cloth diapers, and flannel all work well).

You want the fill material to be $\frac{1}{4}$ to $\frac{1}{2}$ inch thick. I used 8 layers of flannel.





Sew your fill material together
to keep the layers in place.

I just stitched all the layers together with my machine about an inch
from the edge.

Sew exterior ("pillow case") of support pillow using $\frac{1}{4}$ inch seam.
Leave bottom open (the straight edge).

Trim seams, turn right side out and place filling inside.

Fold bottom edge in and stitch closed (I used my machine and just
stitched it closed about $\frac{1}{8}$ inch from the edge).

Place pillow in wrap and tie inner blanket in place.

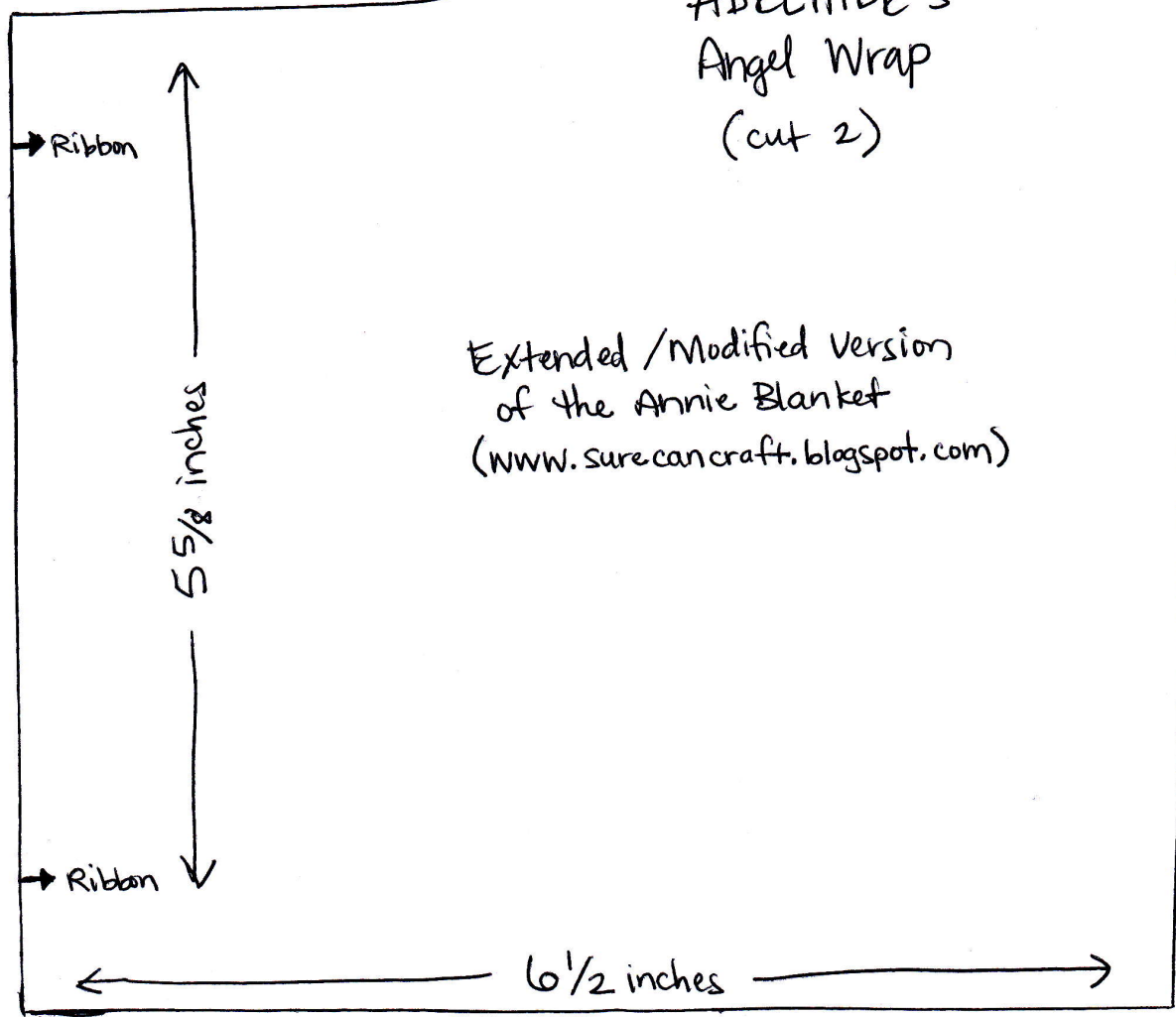


Pattern, or items made using this pattern, are not to be sold. They are to be used / made solely for the purpose of bereavement support. If you wish to share this pattern, please share the link to this tutorial.
Thank you!

Pattern to be used
only for bereavement
support. Please do not
sell pattern or items
made using this pattern.

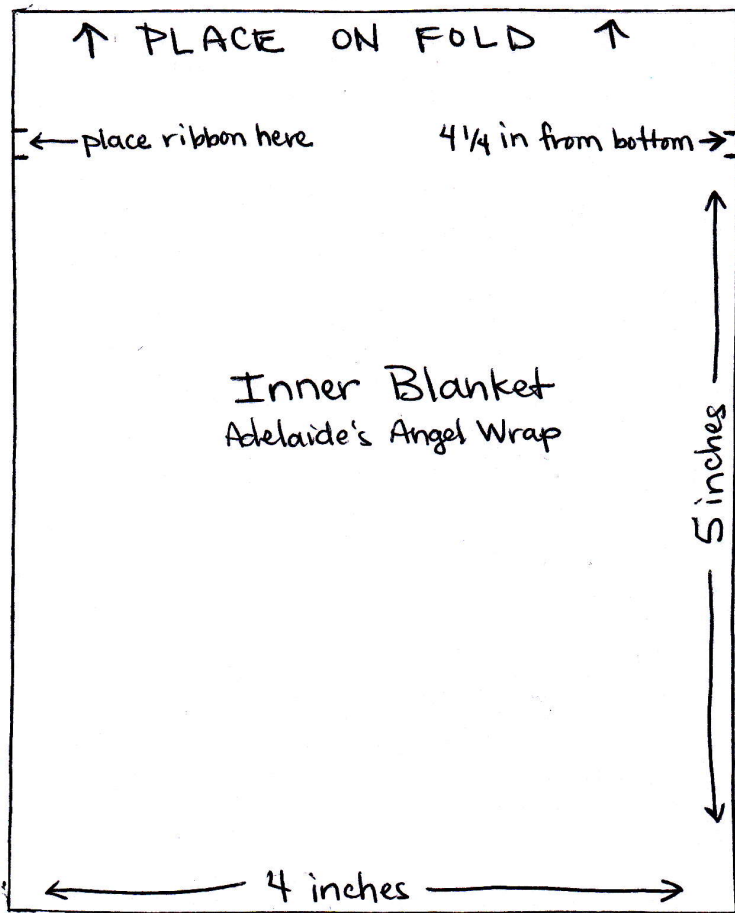
↑ PLACE ON FOLD ↑

ADELAIDE'S
Angel Wrap
(cut 2)



Extended / Modified Version
of the Annie Blanket
(www.surecancraft.blogspot.com)

ourtttsjourney.blogspot.com



ourtttsjourney.blogspot.com

SUPPORT PILLOW
for Adelaide's Angel Wrap

